

Monnow Road, London, SE1 5RQ

A well-presented, one bedroom Victorian apartment, located in the heart of Bermondsey.

The apartment boasts a naturally bright reception room, a well-kept kitchen with plenty of storage as well as space to dine, a tidy bathroom, and a double bedroom. Additional storage can be found in the hallway. Residents car parking permits available.

The surrounding area features many local amenities such as bars, restaurants, supermarket, the local Bermondsey blue market, convenience store and cafes. The property also has good transport links and is only a walk away from the greenery of Southwark Park.

- One Bedroom Victorian Apartment
- Furnished
- Excellent Location
- Good Transport Links
- Plenty of Storage
- New EU king Emma Mattress
- Natural wood fittings throughout
- Brand new boiler/ central heating with Homecare cover
- Brand new loop pile carpet in Bedroom with high performing acoustic underlay

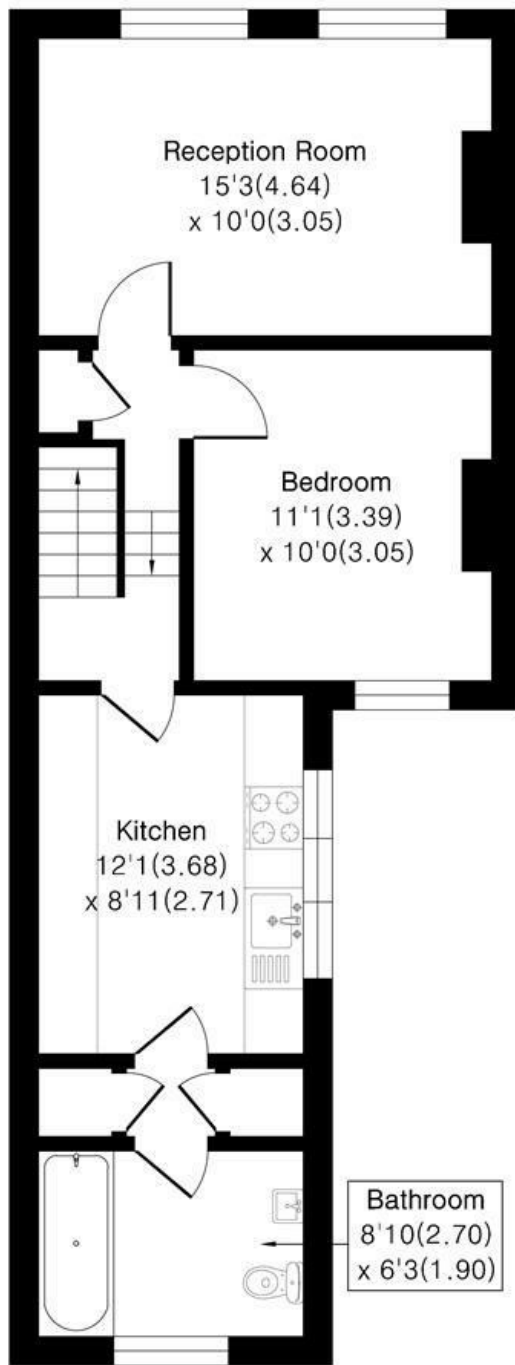
Alex & Matteo
ESTATE AGENTS

£1,800 Per month

Monnow Road, London, SE1 5RQ

Approximate Area = 525 sq ft / 48.8 sq m

For identification only - Not To Scale



First Floor



Floor plan Produced in accordance with RICS Property Measurement 2nd Edition, incorporating International Property Measurement Standards (IPMS2 Residential). Produced for Alex & Matteo Estate Agents.



Energy Efficiency Rating		Current	Potential
Very energy efficient - lower running costs			
(92 plus) A			
(81-91) B			
(69-80) C			
(55-68) D		67	73
(39-54) E			
(21-38) F			
(1-20) G			
Not energy efficient - higher running costs			
England & Wales		EU Directive 2002/91/EC	